

Sauna electrical connections

All the electrical connections must be made by certified electrician.

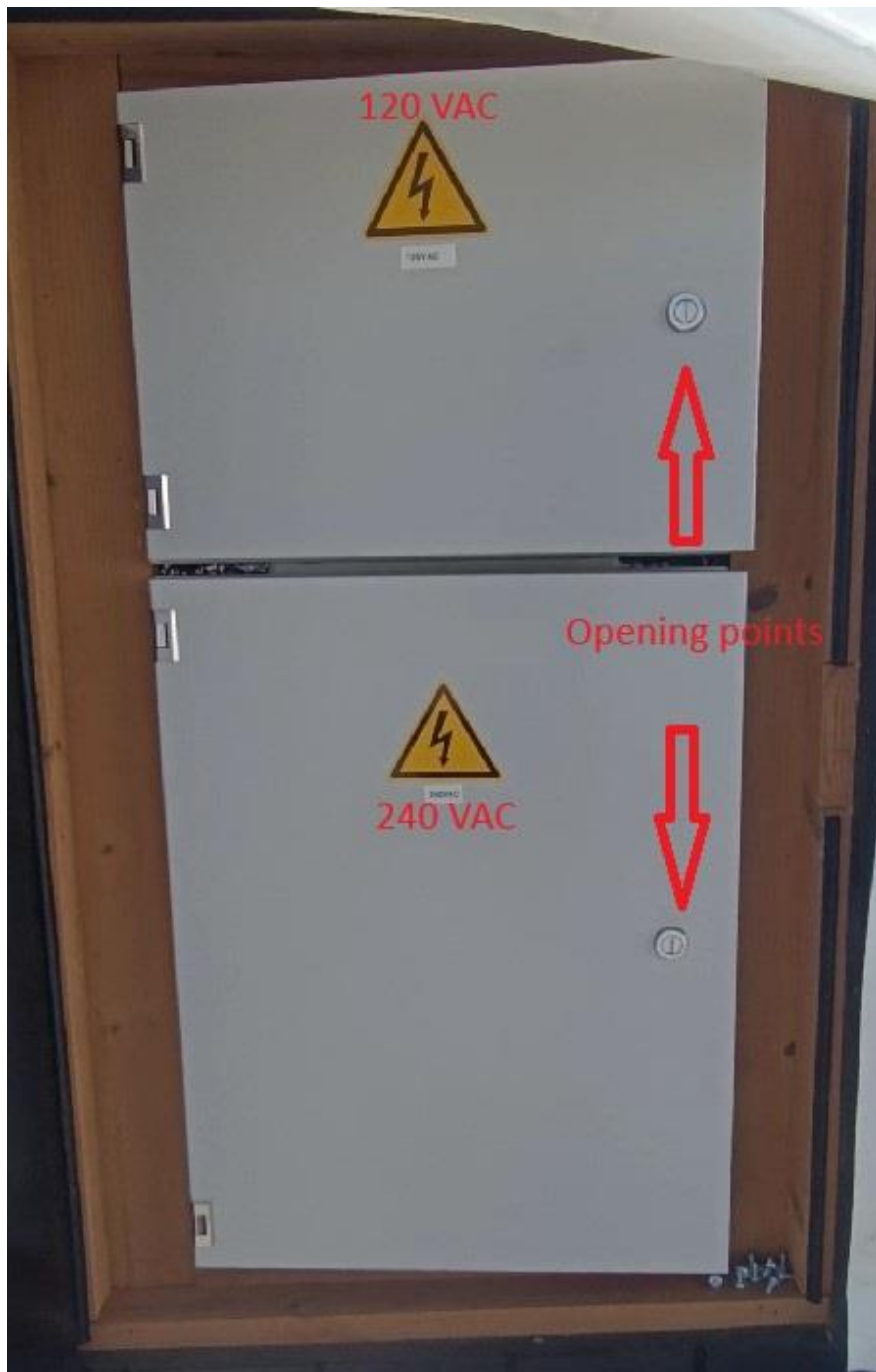
1. Two electrical boxes (120 VAC ja 240 VAC) are located behind wooden door.



At first you must unlock the door with small key, that comes with sauna.



2. Behind wooden door you will find electrical boxes. Upper box is 120 VAC for LED lights and lower one 240 VAC for heater control unit. Electrical box doors can be opened with flat head screwdriver.



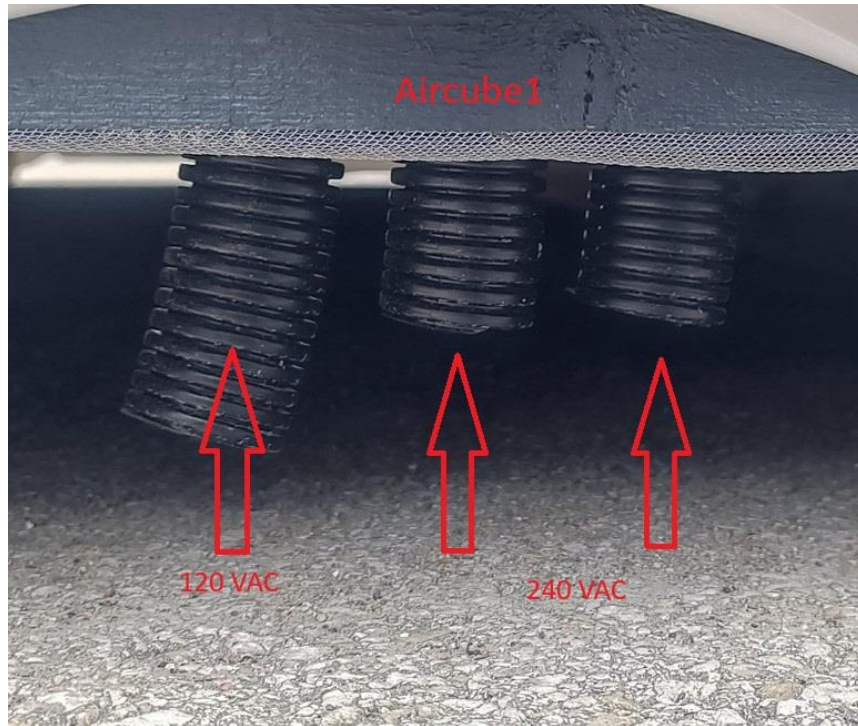
3. In order to access electrical connections you must unscrew metal covers.



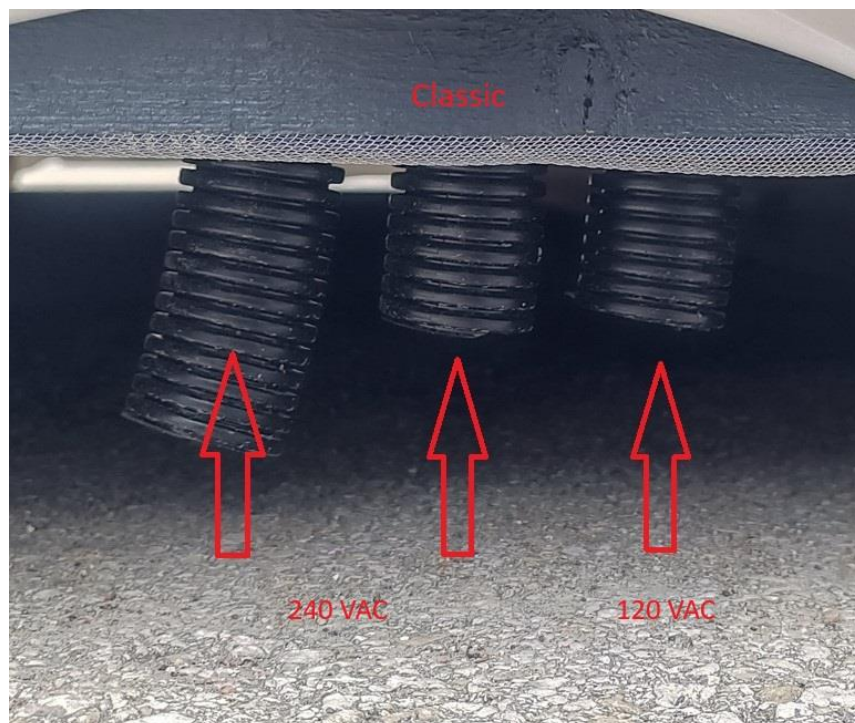
4. After you have removed metal covers, you will find distribution terminal blocks, where power supply cables must be connected. Powering lights/vent 120V max. 1kW/9A, wires three 16AWG, 600V and for powering heater 240V max. 11 kW/46A, four wires 10AWG, 600V. All cables must be external use only.



5. Underneath the sauna, there are three conduit pipes, which are intended to run through power supply cables for sauna.
Left pipe in Aircube1 sauna is for 120 VAC electrical box and two others are for 240 VAC box.



- Right pipe in Classic sauna is for 120 VAC electrical box and two others are for 240 VAC box.



6. Cables will enter 240 VAC box through holes in bottom of electrical cabinet.



Cabel in 120 VAC box will enter through the side of the cabinet.



7. Wires must be connected to distribution terminal blocks and tightened with the screws.

240 VAC box:

L1 – 120 VAC live wire

L2 – 120 VAC live wire

N – neutral wire

PE – ground wire



120 VAC box:

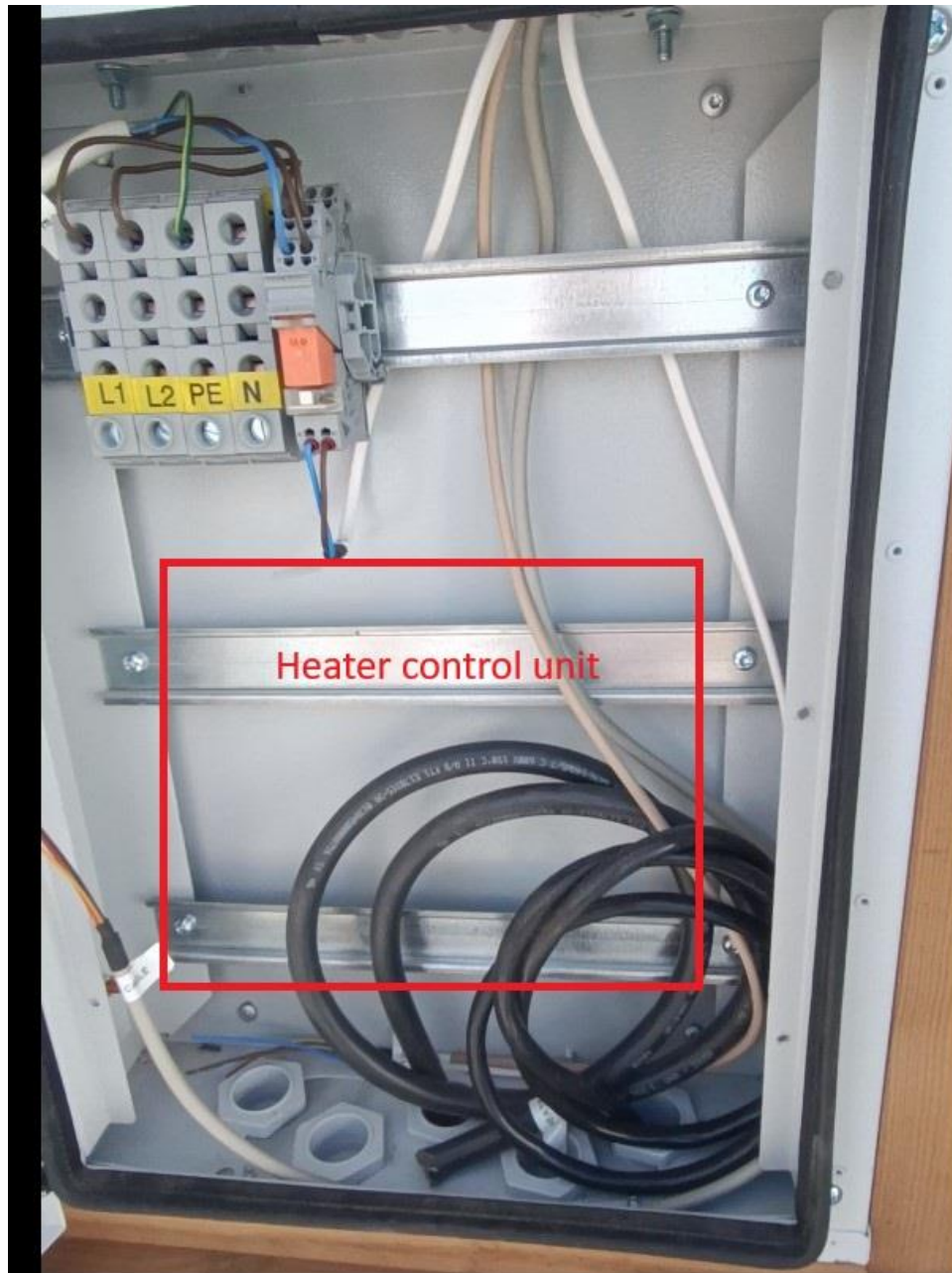
L1 – 120 VAC live wire

N – neutral wire

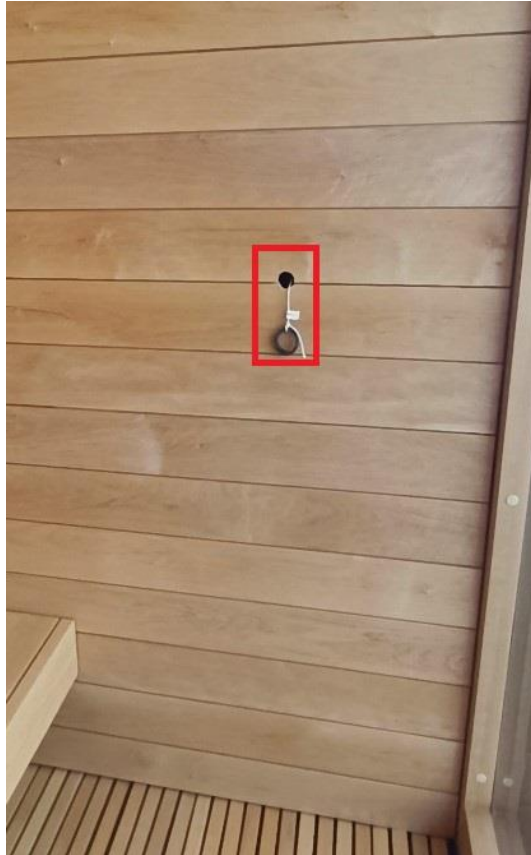
PE – ground wire



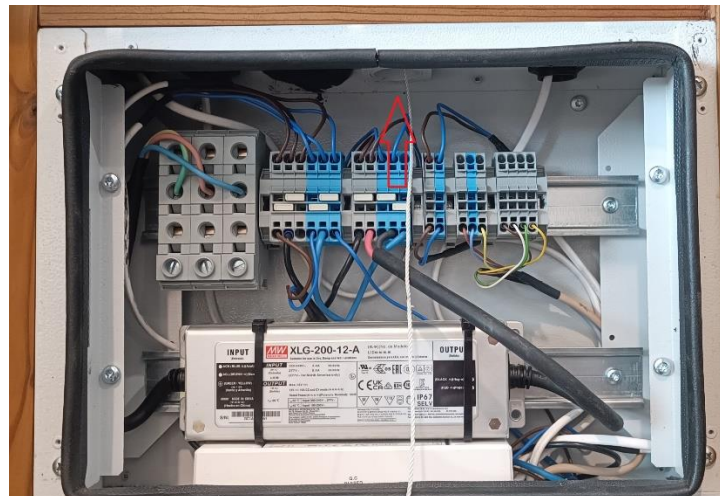
- 240 VAC electrical cabinet has free space for mounting heater control unit box. All cables that need to be connected to control unit are labeled. Heater manufacture installation manuals must be followed.



9. Inside the sauna there are preparations made for controller installations. There is string though conduit, that leads to 120 VAC electrical box. String and controller cable must be tied and pulled from the other side of the string to replace string with the cable. Follow the manufacture installation manual to choose correct cable.



Controller cable location inside 120 VAC electrical box.



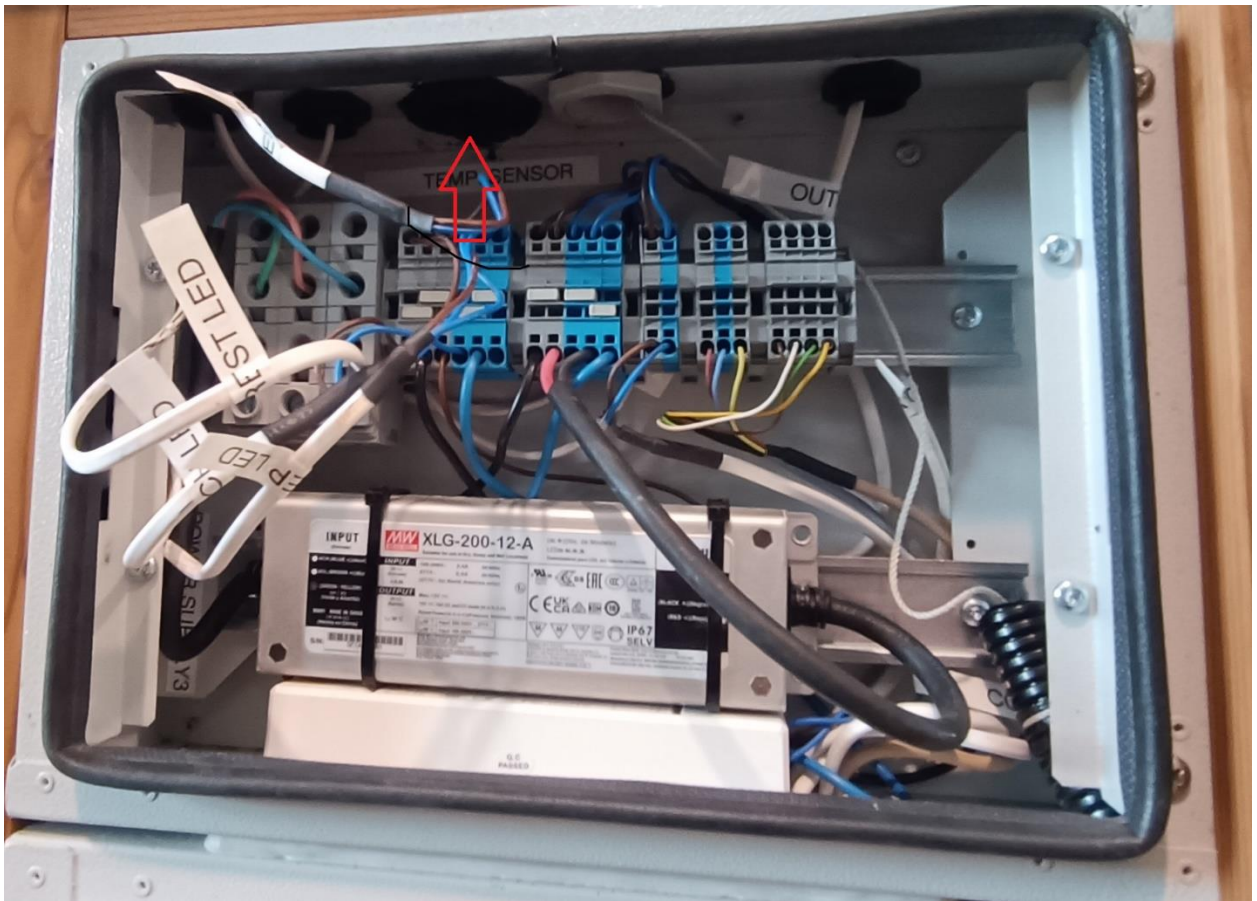
10. Door sensor cable (2x0,75) is preplaced trough door threshold. While mounting heater, the door sensor must be installed. Door sensor must be flush with the door threshold and the magnet



11. To install temperature sensor, hole needs to be thrilled through heater side of the wall. Thrilled hole must be at least 2 inches deep, but not more than 3 inches. Location of the hole is **shown on the drawings**. Measurement must be taken from the window frame and the ceiling.

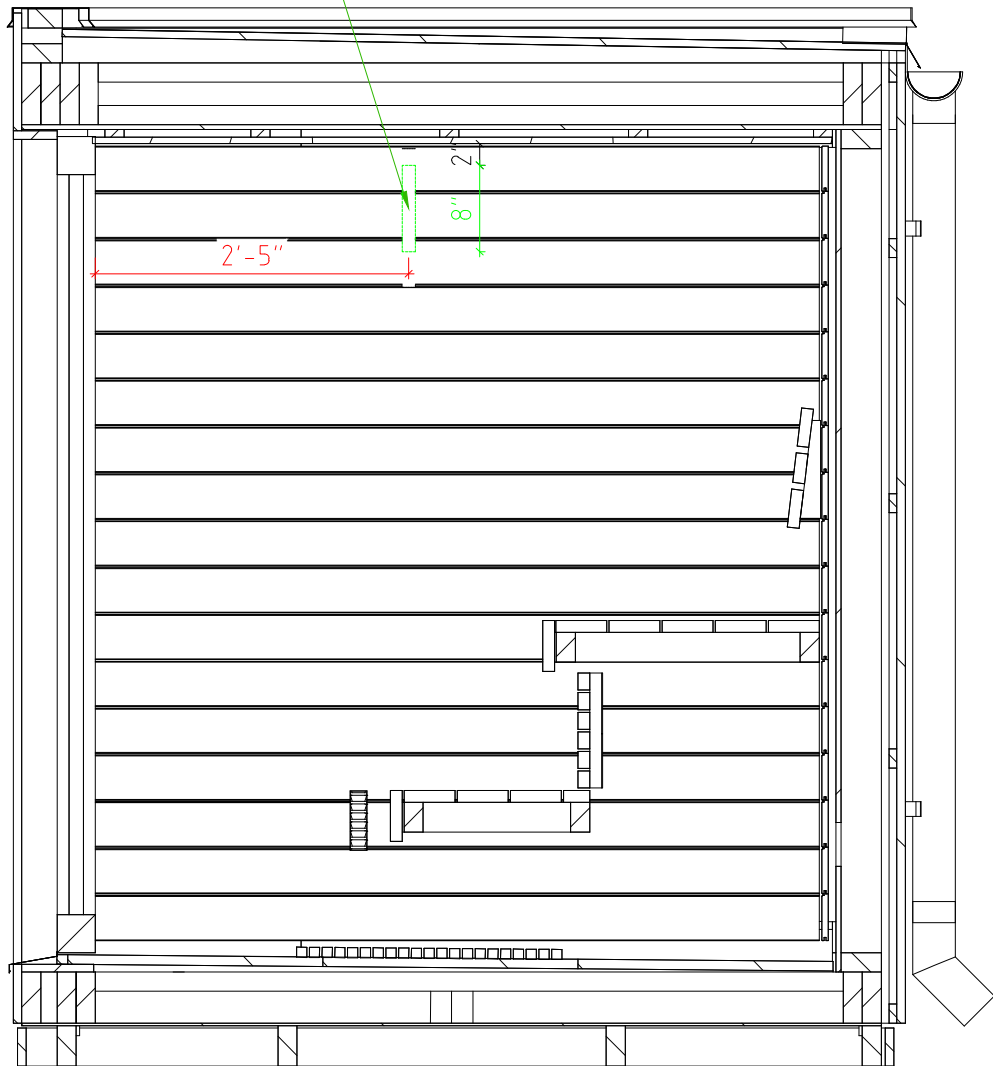


Inside the wall is rigid pipe, which leads to the 120 VAC electrical box. After the hole is drilled, suitable cable must be pulled through hole and pipe. Follow heater manufacture installation manuals.



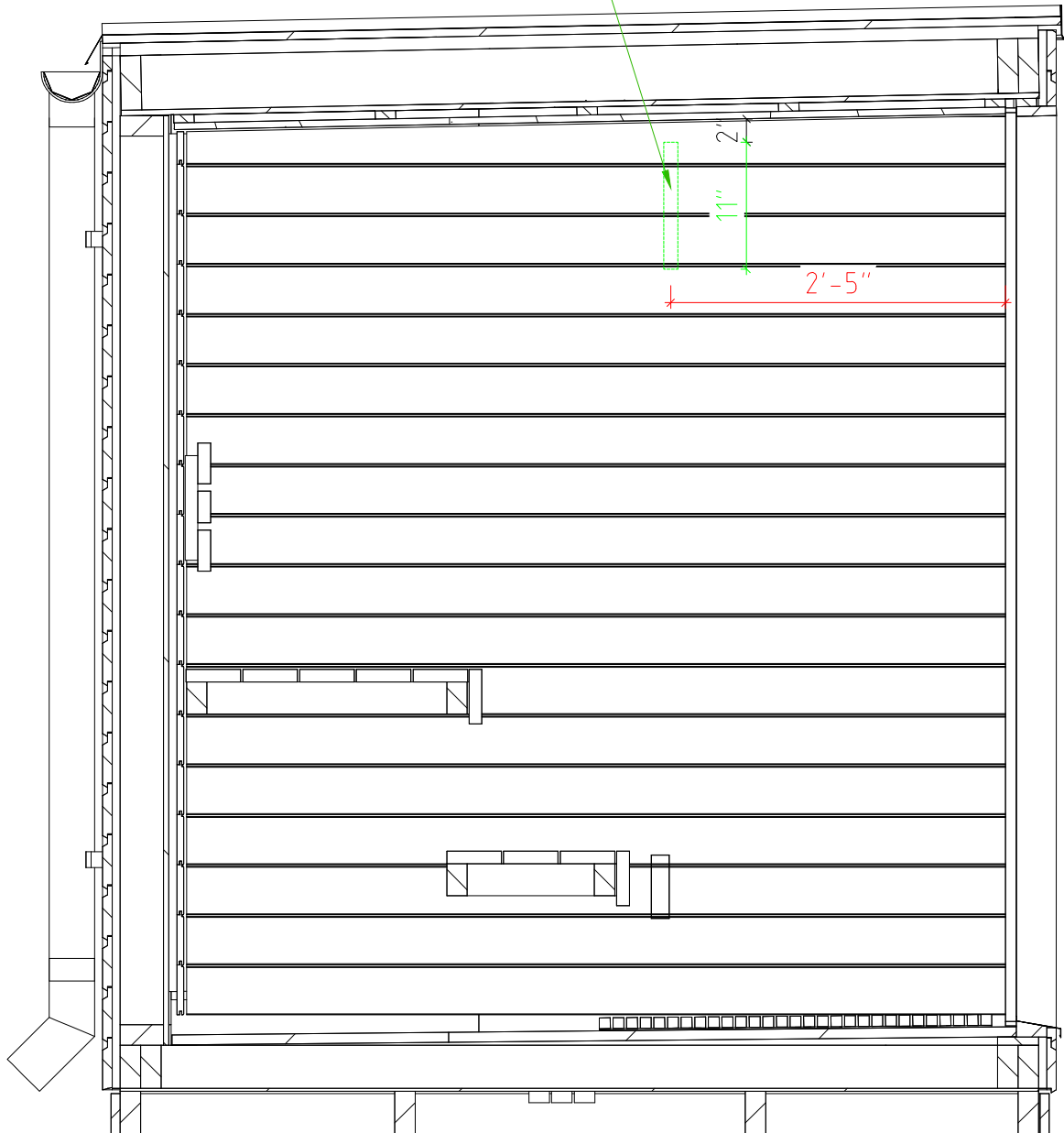
AirCube One

Pipe location in the wall for temperature sensor
height 2-10 inches from ceiling
Client can drill the hole in the appropriate height
and rurd the wire through



Saunum Classic

Pipe location in the wall for temperature sensor
height 2–13 inches from ceiling
Client can drill the hole in the appropriate height
and rurd the wire through



AirCube Three

Pipe location in the wall for temperature sensor
height 2-10 inches from ceiling
Client can drill the hole in the appropriate height
and rurd the wire through

